

UNIVERSITY *of* WASHINGTON

# HUSKY GUIDE

2024–2025

## TABLE OF CONTENTS

**04** COLLEGE MINDSET

**06** YOUR ACADEMICS

**10** ACADEMIC CALENDAR

**12** PAYING FOR COLLEGE

**14** LIFE ON CAMPUS

**16** CAMPUS ENGAGEMENT

**18** YOUR WELL-BEING

## HOW TO USE THIS GUIDE

Getting started at the UW doesn't come with an instruction manual, but the Husky Guide comes pretty close. To ensure an easy transition into your first year, follow the task list in this guide, which look like this:

- **Complete Pre-A&O Modules**  
[fyp.uw.edu/aoprereqs](http://fyp.uw.edu/aoprereqs)

Visit [fyp.uw.edu/huskyguide](http://fyp.uw.edu/huskyguide) to view the electronic version of this booklet.

## A&O MODULES

Not everyone has access to the same advice, and some advice might be out of date. The A&O modules give you the most up to date information about what you need to know, do and expect for your first year. While most of the information included in the Husky Guide and the A&O modules can be found online, these resources package everything you need in one place, so you don't miss anything.

Completing the **pre-A&O modules** will give you a head start on understanding academic requirements and the course registration system so you can make the most of your time at A&O.

## ONLINE RESOURCES

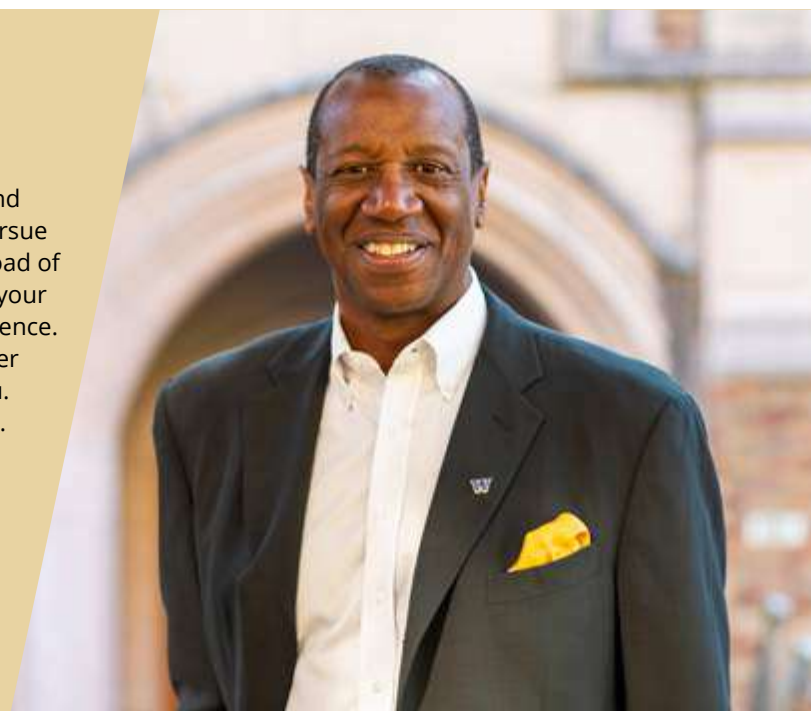
Even before you arrive on campus, gain valuable information about academics at the UW with our online and video resources.  
[fyp.washington.edu/orientation-resources](http://fyp.washington.edu/orientation-resources)

### DEAR FIRST-YEAR STUDENTS,

Welcome to the University of Washington! When you chose to come to the UW, you chose to walk on the path of knowledge and understanding; to build bridges across difference; to actively pursue facts and information. UW students, faculty and staff take the road of service and leadership — together. We are glad you're bringing your unique insights and contributions to our collective Husky experience. In your time here I hope that you reach out, connect and discover more about the UW, who you are and what matters most to you. Know that your Husky family is proud of you and is here for you.

#### ED TAYLOR

Vice Provost and Dean, Undergraduate Academic Affairs  
Professor of Educational Leadership and Policy Studies



## WELCOME FROM FIRST YEAR PROGRAMS

You are now officially part of our Husky community! We hope you find this guide helpful as you prepare to join us on campus. Our programs provide opportunities to deepen your knowledge of the University of Washington as you navigate through your first year. We are looking forward to learning with you and ensuring that you have a smooth transition. Visit us in Mary Gates Hall (Rm 120) or the Commuter & Transfer Commons (HUB 141) before the quarter begins. Go Dawgs!

**The First Year Programs & Digital Engagement Team**  
Student Academic Services, Undergraduate Academic Affairs

[fyp@uw.edu](mailto:fyp@uw.edu) • [fyp.uw.edu](http://fyp.uw.edu) • 206-543-4905 (voice) • 206-207-5564 (text)



## KNOW YOUR LINGO

### COMMON UW TERMS

<b>A&amp;H</b>	Arts & Humanities	<b>OFSL</b>	Office of Fraternity and Sorority Life
<b>A&amp;O</b>	Advising & Orientation	<b>OGR</b>	Office of Government Relations
<b>A&amp;S</b>	College of Arts & Sciences	<b>OL</b>	Orientation Leader
<b>ASP</b>	Academic Support Programs	<b>OMA&amp;D</b>	Office of Minority Affairs & Diversity
<b>ASUW</b>	Associated Students of the University of Washington	<b>OSFA</b>	Office of Student Financial Aid
<b>CAMP</b>	College Assistance Migrant Program	<b>OSVL</b>	Office of Student Veteran Life
<b>CELE</b>	Community Engagement and Leadership Education	<b>OUR</b>	Office of the University Registrar
<b>CIRCLE</b>	Center for International Relations & Cultural Leadership Exchange	<b>PHA</b>	Panhellenic Association
<b>CLUE</b>	Center for Learning and Undergraduate Enrichment	<b>PHE</b>	Peer Health Educator
<b>CSSC</b>	Community Standards & Student Conduct	<b>RSN</b>	Reasoning
<b>CTC</b>	Commuter & Transfer Commons	<b>RA</b>	Residential Adviser
<b>DRS</b>	Disability Resources for Students	<b>RCG</b>	Regional Connection Groups
<b>ECC</b>	Ethnic Cultural Center	<b>ROTC</b>	Reserve Officer Training Corps
<b>E-FIG</b>	Engineering First-year Interest Group	<b>RSO</b>	Registered Student Organization
<b>EFS</b>	Early Fall Start	<b>SAF</b>	Services & Activities Fee
<b>EOP</b>	Educational Opportunity Program	<b>SAO</b>	Student Activities Office
<b>EPE</b>	Engineering Peer Educator	<b>SEVIS</b>	Student and Exchange Visitor Information System
<b>EXPD</b>	Center for Experiential Learning and Diversity	<b>SFC</b>	Student Food Cooperative
<b>FAFSA</b>	Free Application for Federal Student Aid	<b>SFS</b>	Student Fiscal Services
<b>FIG</b>	First-year Interest Group	<b>SLN</b>	Schedule Line Number
<b>FYP</b>	First Year Programs	<b>SORC</b>	Student Organization Resource Center
<b>GPSS</b>	Graduate & Professional Student Senate	<b>SPD</b>	Seattle Police Department
<b>HFS</b>	Housing & Food Services	<b>SSc</b>	Social Sciences
<b>HLI</b>	Husky Leadership Initiative	<b>STF</b>	Student Technology Fee
<b>HUB</b>	Husky Union Building	<b>TA</b>	Teaching Assistant
<b>IFC</b>	Interfraternity Council	<b>T-FIG</b>	Transfer First-year Interest Group
<b>IMA</b>	Intramural Activities Building	<b>TRIO</b>	Federal programs for individuals from disadvantaged backgrounds
<b>ISS</b>	International Student Services	<b>UAA</b>	Undergraduate Academic Affairs
<b>MGC</b>	Multicultural Greek Council	<b>UW</b>	University of Washington or "U Dub"
<b>NPHC</b>	National Pan-Hellenic Council	<b>UWL</b>	UW Leaders
<b>NSc</b>	Natural Sciences	<b>UWPD</b>	UW Police Department
<b>NSEOF</b>	New Student Enrollment and Orientation Fee	<b>WAC</b>	Waterfront Activities Center



## COLLEGE MINDSET &

# embracing the journey

The University of Washington expects you to be informed of the Student Conduct Code and be a responsible member of our community. Use these topics to ask questions about what it means to be a UW student. [fyp.uw.edu/expectations](http://fyp.uw.edu/expectations)

### ACADEMIC INTEGRITY

We expect you to practice high standards of academic and professional honesty and integrity as defined in Student Conduct Code WAC 478-121-107. In doing so, you will be part of a vibrant intellectual community striving for academic excellence. Huskies have integrity.

→ **What does it mean to have integrity as a first-year student at the UW?**

### ACADEMIC ENGAGEMENT

To be successful, instructors expect you to commit yourself to being present and engaged both in the classroom and with outside studies, assignments and activities. There are an incredible number of staff and resources available and waiting to support your journey, and we expect you as a student to ask for help when you need it.

→ **How do you define being present and engaged in your classroom?**

### COMMUNITY AND COMPASSION

You are joining a community with a long-standing and growing commitment to equity, inclusion and diversity. We expect you to be aware of your own biases and seek to understand many perspectives and individuals' narratives. You will experience many ways to make connections and build your own community and network of support, both in person and online.

→ **How will you engage in fostering community for yourself?**

### CO-CURRICULAR INVOLVEMENT

Your academics are an important part of your time at the UW, but they are only one part of the complete picture. We expect you to engage in co-curricular involvement, which can include part-time jobs, internships, community service opportunities, tutoring students at a local elementary school, getting involved with research and more.

- **What is one area you want to explore in your first quarter at the UW?**
- **How will you engage in outside studies, assignments and activities?**

### ETHICAL CONDUCT

You will find yourself in unique situations that require you to act ethically and with the utmost integrity. We expect that you hold not only yourself, but also your peers, to the highest standards of ethical conduct and consider a variety of perspectives when making decisions.

- **Who can you go to for support and advice when faced with a dilemma?**

### DID YOU KNOW . . .

Before you arrive on campus, you are expected to read the Student Conduct Code. [fyp.uw.edu/hgcodeofconduct](http://fyp.uw.edu/hgcodeofconduct)

## FIRST GEN AT THE UW

Are you the first one in your family to go to college? Here are a few tips to begin your journey:

1. **You already have a built-in network: your departmental or pre-major adviser.** Meet with them frequently at first, as your advisers can help you start to build your own network by connecting you to people in your unique areas of interest.
2. **Research and utilize your resources.** The UW has resources for so many things — and a lot of them are here in this guide — but it is up to you to tap into them. Seek out resources that align with your academic and extracurricular interests and values.
3. **Ask questions in class and visit the office hours of your professors and teaching assistants.** They can help you with course materials, and you will stand out as someone who cares about the course and your grade.
4. **Continue to use the same mindset that helped you become a Husky.** Now that you are at the UW and part of our rich campus community, use your first-gen initiative to take advantage of the resources at your fingertips. Your lived experience is a strength — what else can you accomplish on your path to graduation?



## CELEBRATE FIRST GEN

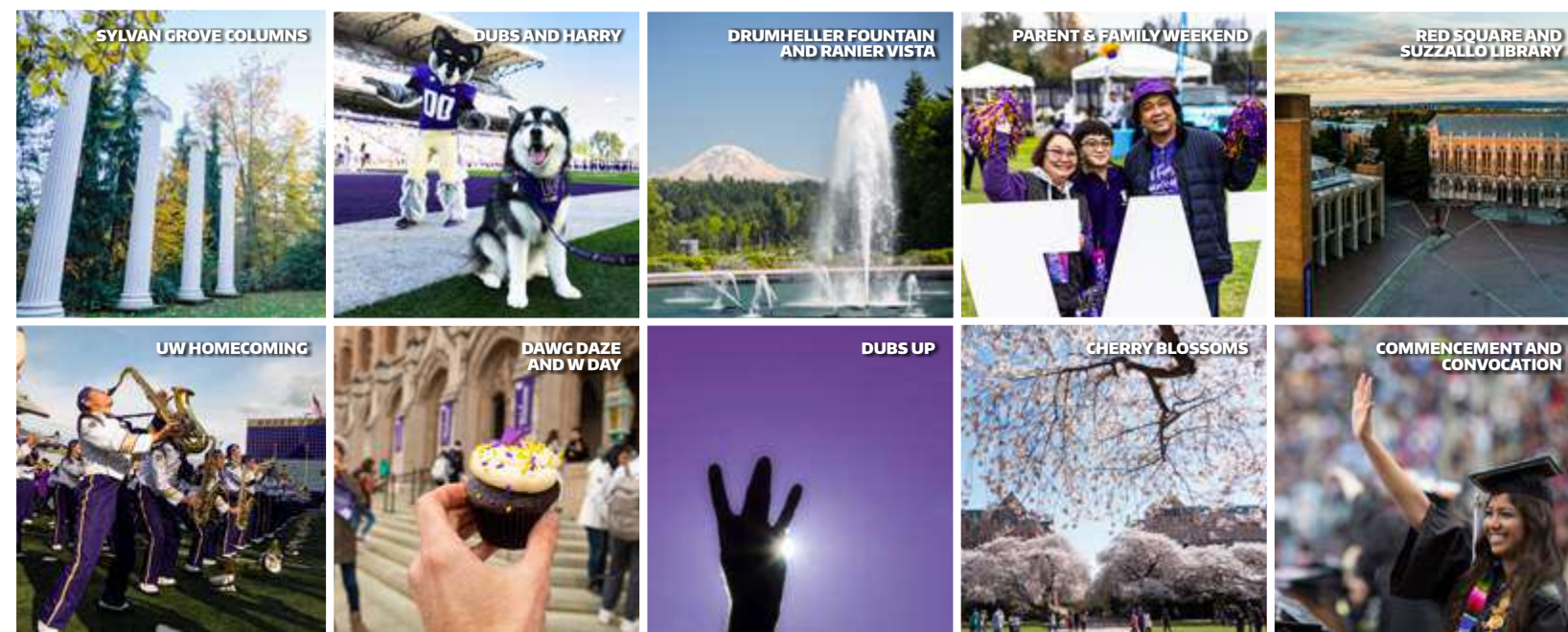
National 1st-Generation College Celebration | November 8  
Bothell | Seattle | Tacoma

Learn about what it means to be first gen and explore resources. [firstgen.uw.edu](http://firstgen.uw.edu)

Celebrate with us! [uw.edu/diversity/national-first-gen-day](http://uw.edu/diversity/national-first-gen-day)

## DISCOVER YOUR UW TRADITIONS

Participating in UW traditions will help you feel close with your Husky community and make new friends. Here are some fun traditions to join as you begin your first year. Learn more at [fyp.uw.edu/traditions](http://fyp.uw.edu/traditions)





## YOUR ACADEMICS &

## academic support

### FINDING ACADEMIC SUPPORT

Academic success includes reaching out for support early in your first year. Below are common support areas most UW students connect with early on. [academic-support.uw.edu](https://academic-support.uw.edu)

#### ACADEMIC COACHING

Meet with peer academic success coaches who provide support to develop study skills and work with you to create a personalized plan for your academic goals.

#### WRITING CENTERS

Receive individual support at any stage of the writing process, including technical and career writing. Peer writing tutors are available at the Odegaard Writing & Research Center.

#### STUDY CENTERS

Informal study spaces for certain subject areas. Can include computers and support from your peers or teaching assistants. Explore all the study centers on campus. [fyp.uw.edu/hgcenters](https://fyp.uw.edu/hgcenters)

#### TUTORING

The Center for Learning and Undergraduate Enrichment (CLUE) provides drop-in tutoring and exam reviews for specific subjects facilitated by peer tutors. Connect with peers in these programs and ask questions in a supportive environment.

### DISABILITY RESOURCES

**Disability Resources for Students (DRS):** Helps students find disability-related accommodations. Mary Gates Hall 011 [fyp.uw.edu/hgdrs](https://fyp.uw.edu/hgdrs)

**Disability and D/deaf Cultural Center (D Center):** A space where students can foster community at the UW and beyond. Husky Union Building 327 [fyp.uw.edu/hgdcenter](https://fyp.uw.edu/hgdcenter)

#### ACADEMIC CHECKLIST

- Create a plan to build your college study skills**  
[fyp.uw.edu/hgstudy](https://fyp.uw.edu/hgstudy)
- Know the tutoring spaces on campus**  
[fyp.uw.edu/hgtutoring](https://fyp.uw.edu/hgtutoring)
- Check the course reserves for textbooks**  
[lib.washington.edu/types/course](https://lib.washington.edu/types/course)
- Read the UW-IT Quick Start Guide**  
Access free software and review registration tools in the "Get to Work" section.  
[itconnect.uw.edu/students](https://itconnect.uw.edu/students)
- Review the Undergraduate Researcher Tutorial**  
Level up your library research skills.  
[fyp.uw.edu/hgtutorial](https://fyp.uw.edu/hgtutorial)
- Review the Office of Undergraduate Research resources**  
[uw.edu/undergradresearch](https://uw.edu/undergradresearch)
- Transfer your Individual Education Plan (IEP) or 504**  
Did you have an IEP/504 or accommodations for a disability or condition in high school? Check in with DRS. [fyp.uw.edu/hgdrs](https://fyp.uw.edu/hgdrs)

### CONNECT WITH ACADEMIC ADVISING

As you prepare to meet advisers and register for classes at your Advising & Orientation session, consider the following:

#### FRESHMAN STUDENTS

- Learn about General Education and why it is important. [fyp.uw.edu/hggened](https://fyp.uw.edu/hggened)
- Ask yourself: How can I be intentional and flexible about my course choices?
- Ask yourself: How can I use my first quarter courses to explore my interests both inside and outside the classroom?
- Practice using course registration and planning tools such as MyUW, MyPlan, and DARS.
- Learn how to identify prerequisite coursework for majors. [fyp.uw.edu/hgchooseamajor](https://fyp.uw.edu/hgchooseamajor)
- Review student evaluations in the course evaluation catalog. [uw.edu/cec](https://uw.edu/cec)
- Search [dawgpath.uw.edu](https://dawgpath.uw.edu) to see median course grades and GPA data to make informed decisions about your courses.
- Looking for more guidance? Check out our First-Year Advising Guide for tips on how to navigate your first year. [advising.uw.edu/guides/first-year](https://advising.uw.edu/guides/first-year)

#### TRANSFER STUDENTS

- Learn the requirements for your intended major(s) and understand the department application/declaration process.
- Check to see if all your credits have transferred from your previous institution.
- To understand how the credits from your previous institution apply toward your UW degree, run a degree audit (DARS). [uw.edu/students/reg/dars](https://uw.edu/students/reg/dars)
- Ask your academic adviser how the Satisfactory Progress Policy will impact your timeline. [fyp.uw.edu/hgsatprog](https://fyp.uw.edu/hgsatprog)
- Plan for first quarter registration and ensure you have a balanced schedule and register for the courses you need.  
Course 1: \_\_\_\_\_  
Course 2: \_\_\_\_\_  
Course 3: \_\_\_\_\_  
Course 4: \_\_\_\_\_
- Looking for more guidance? Check out our Transfer Student Advising Guide for tips on how to navigate your first year. [advising.uw.edu/guides/transfer](https://advising.uw.edu/guides/transfer)

### QUESTIONS FOR YOUR ADVISER

You can always ask your adviser anything, but here are some suggested questions to bring up when meeting with your adviser.

- How should I begin the major exploration/preparation process?
- How can I best prepare to make the most out of my first quarter?
- What other offices do I need to be in touch with? What questions do I need to ask those offices?
- Given my academic goals, how should I plan and prioritize classes and other activities?
- Given my academic interests, are there any courses that are important for me to take in my first quarter?
- What are ways that I can achieve my goals, beyond just my choice of major?

### MAINTAINING ACADEMIC INTEGRITY

#### COMMUNITY STANDARDS & STUDENT CONDUCT

- Take pride in doing your own work. You worked hard to be here and we believe in you and your capabilities to be academically successful.
- Make a plan and have time for all your assignments, studying, and exams. This helps ensure that the pressure of deadlines does not lead you to engaging in cheating.
- Check your syllabus for specifics on what your instructor expects of you. There may be expectations that one class has and another does not.
- Although Artificial Intelligence (AI), such as ChatGPT, can offer many opportunities for learning, it can also be misused — check with your professor about proper AI use.
- Learn how to be a successful Husky and make a positive impact at the UW by reviewing the Student Conduct code. [fyp.uw.edu/hgcodeofconduct](https://fyp.uw.edu/hgcodeofconduct)

### ACCESSING YOUR STUDENT RECORDS

#### FAMILY EDUCATIONAL RIGHTS & PRIVACY ACT

FERPA is a federal law that governs the use of student educational records. Students have full access to their academic records by logging into their MyUW account, but access is limited or restricted to others, including parents and family members. [registrar.washington.edu/students/ferpa](https://registrar.washington.edu/students/ferpa)

The following offices have individual processes to authorize users to view student information:

- Financial information: [fyp.uw.edu/hgrelease](https://fyp.uw.edu/hgrelease) (students must log in with their UW NetID)
- Housing: [fyp.uw.edu/hgreleasehfs](https://fyp.uw.edu/hgreleasehfs)
- Medical: [fyp.uw.edu/hgreleasemed](https://fyp.uw.edu/hgreleasemed)



#### DID YOU KNOW . . .

**A 2.0 cumulative grade point average** is needed to be in good academic standing.

## BRINGING CREDIT INTO THE UW

Generally, college-level credit brought into the UW will contribute to the 180 credits required for graduation. The following tools and information will help you understand how your credit will count toward your degree.

### TRANSFER CREDIT CHECKLIST

- ❑ **Review the UW Equivalency Guide**  
Find out how courses taken at a Washington state community or technical college will transfer to the University of Washington.  
[admit.washington.edu/apply/transfer/equivalency-guide](http://admit.washington.edu/apply/transfer/equivalency-guide)
- ❑ **Review credits for exams (AP, IB, A-Level)**  
Find out how your exam scores can translate to UW classes.  
[admit.washington.edu/apply/transfer/exams-for-credit](http://admit.washington.edu/apply/transfer/exams-for-credit)
- ❑ **Check your degree audit**  
Make sure your transferred General Education credits fulfill UW requirements. Take note of what, if any, prerequisites you still need to complete, and if you are eligible to begin taking coursework in your major this quarter.  
[myplan.uw.edu](http://myplan.uw.edu)

### DID YOU KNOW ...

A student's class standing is determined by the total number of transfer credits awarded by the UW, not by the number of years of college study or by the completion of an associate degree.

FRESHMAN = 0-44 CREDITS

SOPHOMORE = 45-89 CREDITS

JUNIOR = 90-134 CREDITS

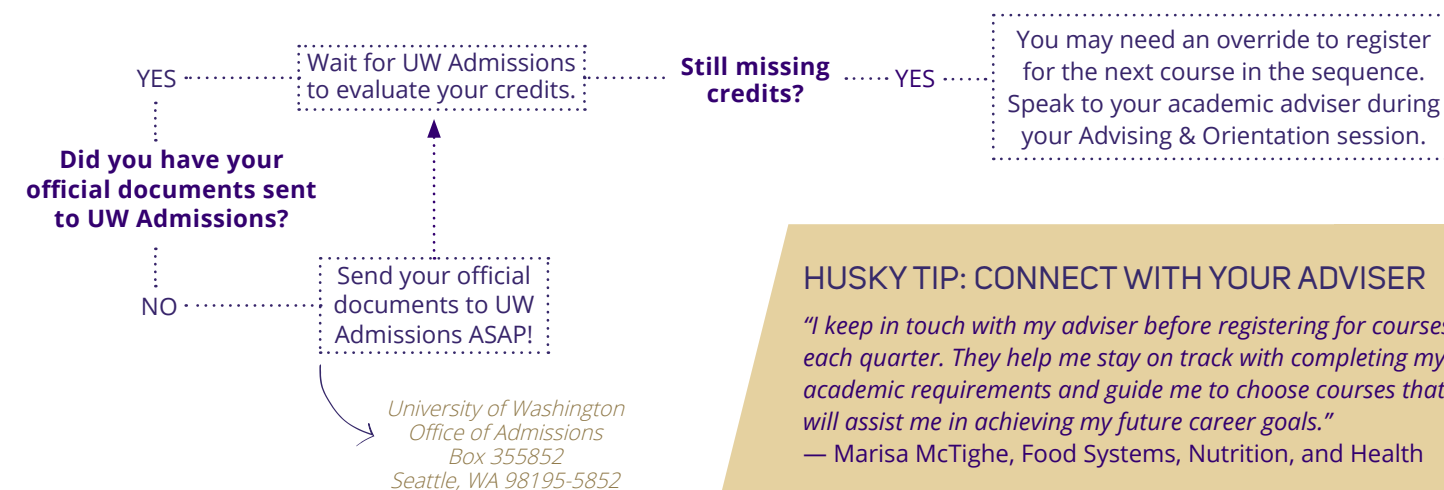
SENIOR AND BEYOND = 135+ CREDITS

## INTERPRETING COURSE EQUIVALENCIES

DEFINITION	EXAMPLE	BREAKDOWN
<b>Specific equivalency</b> Many transfer courses are listed with a specific UW course equivalency and are found at the top of your unofficial UW transcript.	BIO A 201 (5)	This community college course is offered for five credits and is designated as equivalent to a specific UW course, BIO A 201, which is also offered for five credits. The course meets the Natural Sciences (NSc) component of UW graduation requirements.
<b>Not a specific equivalency</b> A 1XX or 2XX instead of a course number indicates that the course credit transfers but is not equivalent to a specific course at the UW. 1XX indicates transfer courses offered at the 100 level; 2XX indicates courses offered at the 200 level.	UW 1XX  BIOL 2XX	The course is considered an interdepartmental course, as the UW does not have an equivalent department. The course is assigned the generic UW 1XX equivalency and may be used toward general graduation requirements as appropriate.  Content is not equivalent to a specific UW course but does generally correspond to a specific UW program. In this case, the biology program accepts the course for credit.
<b>Courses taken as part of a sequence</b> In some cases, you must complete an entire sequence of courses at your transfer institution to be awarded specific UW course equivalencies. If only one or two courses are completed, then the credit is usually awarded as departmental 1XX or 2XX.	CHEM 152,162 (5,6) if both courses taken; otherwise, CHEM 1XX	In this example, both chemistry courses must be completed to earn the UW equivalencies; if only one course is completed, then the credit is usually awarded as departmental 1XX or 2XX.

## ARE YOU MISSING CREDITS?

If you have college credit that you don't see on your unofficial transcript in your MyUW portal, please review the following steps:



### HUSKY TIP: CONNECT WITH YOUR ADVISER

*"I keep in touch with my adviser before registering for courses each quarter. They help me stay on track with completing my academic requirements and guide me to choose courses that will assist me in achieving my future career goals."*  
— Marisa McTighe, Food Systems, Nutrition, and Health

## ACADEMIC TECHNOLOGY

### ESSENTIAL SITES

[my.uw.edu](http://my.uw.edu)

MyUW is the front portal of University of Washington for anybody with a UW NetID. Access the web resources you need to fulfill your goals at the university.

[myplan.uw.edu](http://myplan.uw.edu)

MyPlan helps you create an academic plan for next quarter, next year, or all the way to graduation; audit your progress; discover which courses you may need to complete your degree; and share plans with your adviser.

[dawgpath.uw.edu](http://dawgpath.uw.edu)

DawgPath is a web application that can help you manage your course load, discover interesting courses and majors, and connect with your adviser. Additionally, the tool helps you determine how competitive you are for a capacity-constrained major and helps you better navigate your path to a degree once you declare a major.

[mobile.uw.edu](http://mobile.uw.edu)

Mobile UW brings the mobile apps for a wide range of UW services to your fingertips.

[washington.edu/calendar](http://washington.edu/calendar)

The UW Event Calendar shows listings for events, performances, lectures, exhibits and more on all three campuses.

[notify.uw.edu](http://notify.uw.edu)

Notify.UW sends notifications about course availability. Subscribe to courses you are interested in and choose to be notified via email and/or SMS text message when a seat opens up.

### LEARNING TOOLS

[canvas.uw.edu](http://canvas.uw.edu)

Canvas is the official learning-management system of the UW, used in many UW courses.

[uw.hosted.panopto.com](http://uw.hosted.panopto.com)

Panopto is the UW-IT-supported lecture-capture solution, allowing for easy recording and viewing of videos from courses, lectures and presentations.

[polleverywhere.com](http://polleverywhere.com)

Poll Everywhere brings interactive learning to UW classes, and is the official audience-response system of the UW.

[stlp.uw.edu](http://stlp.uw.edu)

The Student Technology Loan Program allows you to borrow laptops, tablets, audiovisual tools and accessories for free.

### GET CONNECTED

[itconnect.uw.edu/campus-wi-fi](http://itconnect.uw.edu/campus-wi-fi)

Wireless internet access is available throughout most buildings on campus and some outdoor areas around campus. Wired internet access is available in all residence rooms, and Husky OnNet provides a secure temporary connection to the UW network from off campus.

[itconnect.uw.edu/uware](http://itconnect.uw.edu/uware)

Download essential software from UW-IT's software catalog and discover online productivity tools available to empower your academic career.

[itconnect.uw.edu/email](http://itconnect.uw.edu/email)

You have two basic options for email: Forward UW email to a personal email inbox, or use an email service offered through the UW, either UW Gmail or UW Exchange Online.

[scout.uw.edu](http://scout.uw.edu)

Scout helps students at the University of Washington find campus study spaces, places to eat on campus, and tech items that meet specific criteria.

# AUTUMN 2024

WEEK	MONDAY	TUESDAY	WEDNESDAY	THURSDAY	FRIDAY	SATURDAY/SUNDAY
1	SEPTEMBER 23 Dawg Daze September 18-27	24	25 Instruction begins	26	27	28-29
2	30 Last day to change registration without fee	01	OCTOBER 02	03	04	05-06
3	07	08	09	10	11 Tuition due	12-13
4	14	15	16	17	18	19-20
5	21	22	23	24	25	26-27
6	28	29	30	31	NOVEMBER 01	02-03
7	04	05	06	07	08	09-10
8	11 Veterans Day	12	13	14	15	16-17
9	18	19	20	21	22	23-24
10	25	26	27	28 Thanksgiving	29 Native American Heritage Day	30-01
11	DECEMBER 02	03	04	05	06 Last day of instruction	07-08 Final exams Dec. 7-13
12	09	10	11	12 Last day to S/NS* course	13	14-15 Winter Break through Jan. 5

# WINTER 2025

WEEK	MONDAY	TUESDAY	WEDNESDAY	THURSDAY	FRIDAY	SATURDAY/SUNDAY
1	JANUARY 06 Instruction begins	07	08	09	10	11-12 12: Last day to change registration without fee
2	13	14	15	16	17	18-19
3	20 Martin Luther King Jr. Day	21	22	23	24 Tuition due	25-26
4	27	28	29	30	31	FEBRUARY 01-02
5	03	04	05	06	07	08-09
6	10	11	12	13	14	15-16
7	17 Presidents' Day	18	19	20	21	22-23
8	24	25	26	27	28	MARCH 01-02
9	03	04	05	06	07	08-09
10	10	11	12	13	14 Last day of instruction	15-16 Final exams Mar. 15-21
11	17	18	19	20 Last day to S/NS* course	21	22-23 Spring Break through March 30

# SPRING 2025

WEEK	MONDAY	TUESDAY	WEDNESDAY	THURSDAY	FRIDAY	SATURDAY/SUNDAY
1	MARCH 31 Instruction begins	APRIL 01	02	03	04	05-06 6: Last day to change registration without fee
2	07	08	09	10	11	12-13
3	14	15	16	17	18 Tuition due	19-20
4	21	22	23	24	25	26-27
5	28	29	30	MAY 01	02	03-04
6	05	06	07	08	09	10-11
7	12	13	14	15	16	17-18
8	19	20	21	22	23	24-25
9	26 Memorial Day	27	28	29	30	JUNE 31-01
10	02	03	04	05	06 Last day of instruction	07-08 Final exams June 7-13
11	09	10	11	12 Last day to S/NS* course	13	14-15 Commencement June 13-15

# SUMMER 2025

WEEK	MONDAY	TUESDAY	WEDNESDAY	THURSDAY	FRIDAY	SATURDAY/SUNDAY
1	JUNE 23 A-term and full-term instruction begins	24	25	26	27	28-29 29: Last day to change full- and A-term registration without fee
2	30	JULY 01	02	03	04 Independence Day	05-06
3	07	08	09	10	11 Tuition due	12-13
4	14	15	16	17	18	19-20
5	21	22	23 Last day of A-term/SNS* deadline	24 Instruction begins B-term	25	26-27
6	28	29 Last day to change B-term registration without fee	30	31	AUGUST 01	02-03
7	04	05	06	07	08	09-10
8	11	12	13	14	15	16-17
9	18	19	20	21	22 Last day of full-term & B-term/SNS* deadline	23-24 Autumn break through Sept. 23

# ACADEMIC CALENDAR

\*You may choose to have a numerically graded course graded as Satisfactory/Non-Satisfactory (S/NS): [registrar.washington.edu/students/goc](http://registrar.washington.edu/students/goc)

The most up-to-date calendar can be found at [fyp.uw.edu/hgdates](http://fyp.uw.edu/hgdates).

## PAYING FOR COLLEGE &

# financial resources

## FINANCIAL RESOURCES

**Financial Aid Office:** Talk to a financial aid counselor to see if adjustments can be made to your financial aid and find other options for help. [finaid.uw.edu](http://finaid.uw.edu) • 206-543-6101

**Emergency Aid:** Emergency aid is available for the unpredictable or unexpected costs that cause significant stress and impact academic success and personal well-being. [uw.edu/emergencyaid](http://uw.edu/emergencyaid)

**Financial Aid Food Security Grant:** Through the Office of Student Financial Aid, students can apply for a \$100 grant that goes directly on their Husky Card and can be used to purchase food at any on-campus vendor. [fyp.uw.edu/hggetfood](http://fyp.uw.edu/hggetfood)

**Food Pantry:** Provides students who experience food insecurity access to shelf-stable food, fresh produce and ready-to-eat items at no cost — just bring your Husky ID. [uw.edu/anyhungryhusky](http://uw.edu/anyhungryhusky)

## DO YOU NEED A JOB?

On-campus hiring occurs year-round, and there are a few central websites where on-campus jobs are listed. **Handshake** is a great platform to find on-campus opportunities. It connects students with employers, both domestic and international, for your next incredible internship or employment opportunity. **Work-study** is a great way to help pay for your education while gaining invaluable experience by working part-time. Explore the websites below and start your search early.

UW Handshake: [uw.joinhandshake.com](http://uw.joinhandshake.com)

Work-study positions: [fyp.uw.edu/hgworkstudy](http://fyp.uw.edu/hgworkstudy)

UW Housing & Food Services (HFS): [fyp.washington.edu/hghfs](http://fyp.washington.edu/hghfs)

UW Libraries: [fyp.washington.edu/hglibrary](http://fyp.washington.edu/hglibrary)

Explore financial resources in the **pre-A&O modules** to learn more about the cost of attendance, money management, understanding financial aid, and paying your tuition bill.

### FINANCES CHECKLIST

- Set up direct deposit with Student Fiscal Services**  
Receive refunds/aid disbursements and give parents/others access to your tuition statement via Info Release.  
[finance.uw.edu/sfs/home](http://finance.uw.edu/sfs/home)
- Create a UW Handshake account**  
[uw.joinhandshake.com](http://uw.joinhandshake.com)
- Build a budget**  
[fyp.uw.edu/hgbudget](http://fyp.uw.edu/hgbudget)
- Make a deposit to your Husky Card account**  
Deposit funds through the Online Card Office with a credit/debit card.  
[hfs.uw.edu/olco](http://hfs.uw.edu/olco)

### HUSKY TIP: WORK ON CAMPUS

*"Working on campus was great; my supervisors were very encouraging of my schoolwork and gave me the support and flexibility I needed to succeed in my academics."*

— Idanis Cruz, Public Health-Global Health

## COMMONLY ASKED QUESTIONS ABOUT FINANCIAL AID

### Should I apply for financial aid?

Yes, if you think you need help paying for college, we strongly encourage you to apply. There is no "income cutoff" or other simple method of determining whether you will qualify for need-based financial aid. In general terms, "financial need" is defined as the difference between what it costs you to attend school and what you and your family can afford to pay.

### What are the various types of financial aid?

There are three main types of financial aid, based on your eligibility: grants/scholarships, which are considered "gift aid" and do not have to be repaid; work study, which allows you to work part-time on or off campus; and loans, which you borrow now and repay after graduating or dropping below half-time enrollment.

### What costs can I use financial aid for during my enrollment at the UW?

You can use financial aid to cover expenses that are related to your education, such as tuition and fees, books/supplies, living expenses (on and off campus), transportation and other personal expenses you may incur.

### How much will I need to borrow?

That depends on how long it takes to complete your degree, your eligibility for other aid besides loans and your personal spending habits. In 2020–21, 34% of UW undergraduates had debt at graduation. These students graduated with an average cumulative loan debt of \$20,793. This is below the national average of \$30,000 borrowed at public schools.

### Why do I need loans? Can't I just use other forms of aid?

Of course, loans should be your last resort for paying for school. However, we do not have enough funds to award grants to all of you, so we end up awarding some loans to help you meet your financial need. We encourage students to fully utilize grants, scholarships and employment wages before considering loans. However, if you do need to fill a financial gap, you can decide how much or how little you want to borrow in loans. You can always repay your loans early, too, without penalty.

### Who can I talk to about my financial aid options?

There are multiple ways you can connect with a Student Financial Aid Counselor: Call 206-543-6101 during our phone service hours, email us at [osfa@uw.edu](mailto:osfa@uw.edu), or visit [finaid.uw.edu](http://finaid.uw.edu).



REMINDER: PRIORITY FAFSA/WASFA DEADLINE IS JANUARY 15, 2025

## WHEN IS TUITION DUE?

On the 3rd Friday of the quarter.

Payments must be received by Student Fiscal Services no later than the tuition due date. Mark all the important add/drop dates on your calendar.

[fyp.uw.edu/hgdates](http://fyp.uw.edu/hgdates)

Please note: Financial aid generally begins disbursing one week prior to the first day of the quarter.

OCT 11	JAN 24	APR 18
AUTUMN 2024	WINTER 2025	SPRING 2025

## SCHOLARSHIPS

UW students are competitive for scholarships supporting a wide range of pursuits. Take advantage of the following resources to support your scholarship search:

### Office of Student Financial Aid Scholarship Information

Provides information and resources for need- and merit-based scholarships.

[fyp.uw.edu/hgscholarship](http://fyp.uw.edu/hgscholarship)

### Office of Merit Scholarships, Fellowships and Awards

Supports students in identifying and applying competitively for scholarships that advance their goals.

[expd.uw.edu/scholarships](http://expd.uw.edu/scholarships)

### Mary Gates Endowment for Students

Scholarships to help students become independent learners and community leaders.

[expd.uw.edu/mge](http://expd.uw.edu/mge)

### Reserve Officer Training Corps

Merit-based scholarships that cover full tuition, a book allowance and a monthly stipend.

[afrotc.uw.edu](http://afrotc.uw.edu)

Send private scholarship checks to this address:

University of Washington Scholarships

PO Box 24967

Seattle, WA 98124

Please include your name and ID number.



## LIFE ON CAMPUS &

*beginning your journey*

### COMMUTE OPTIONS

Transportation Services provides personalized transportation support to help you find a commute that best fits your needs. Contact Commute Options before the start of each quarter to help make your first day of class as smooth as possible.

A week before the quarter starts, your U-PASS will be ready for use on your Husky Card. You will be able to access bus and transit options through King County Metro, Community Transit, Pierce Transit, Kitsap Transit, Everett Transit and Sound Transit, including the Link light rail and Sounder commuter trains. Finalize the activation of your U-PASS by tapping it on any bus or train within the first 60 days of the quarter. Find more information at [transportation.uw.edu](https://transportation.uw.edu).

Over 90% of student trips to campus use options other than driving alone.



#### DID YOU KNOW...

- Husky Card Account** funds can be used for on-campus:
- Dining
  - Shopping
  - Dawg Prints

Additionally, save money by accessing card discounts. [fyp.uw.edu/hgcard](https://fyp.uw.edu/hgcard)

#### LIFE ON CAMPUS CHECKLIST

- Submit your Husky Card photo**  
Submit online early and avoid long wait times at the beginning of the quarter. [hfs.uw.edu/hc-photo](https://hfs.uw.edu/hc-photo)
- Visit the Commuter & Transfer Commons**  
Located in HUB 141. Explore the day-use lockers, kitchenette and lounge space. [fyp.washington.edu/ctc](https://fyp.washington.edu/ctc)
- Tap your U-PASS**  
[fyp.uw.edu/hgupass](https://fyp.uw.edu/hgupass)
- Register your valuables**  
[fyp.uw.edu/hgloveyourstuff](https://fyp.uw.edu/hgloveyourstuff)
- Protect yourself with renters insurance and other safety precautions**  
If you're living on campus, review "Privacy and Safety" in the housing guide. [hfs.uw.edu/resident-guide/safety](https://hfs.uw.edu/resident-guide/safety)
- Enroll in The Pack Rewards - Get a Sticker Every Month**  
Get notices on course materials and savings at the University Book Store, and pick up your sticker of the month. [fyp.uw.edu/hgpr](https://fyp.uw.edu/hgpr)
- Take the sustainability pledge**  
Pledge to take small everyday steps to sustainability. [sustainability.uw.edu/pledge](https://sustainability.uw.edu/pledge)

Before the quarter begins, check out the **post-A&O modules** for information about resources, living on- and off-campus, and sustainability and recycling.

## HOUSING & FOOD SERVICES

Our goal is to support you and provide you with the tools to succeed. Keep the following information to help you navigate the #HuskyHome on-campus living experience. Learn more at [hfs.uw.edu/housing](https://hfs.uw.edu/housing).

### IMPORTANT DATES

Aug. 31, 2024	Fall quarter dining funds available
Sept. 8, 2024	12-month fall quarter dining funds available
Sept. 17, 2024	9-month fall quarter dining funds available
Oct. 31, 2024	Agreement termination notice deadline for winter quarter
Nov. 30, 2024	Winter quarter dining account level change deadline
Jan. 5, 2025	Winter quarter dining funds available
Jan. 31, 2025	Agreement termination notice deadline for spring quarter
Feb. 28, 2025	Spring quarter dining account level change deadline
March 30, 2025	Spring quarter dining funds available
Early April 2025	Returning residents apply for 2025-26 housing
June 14, 2025, at noon (9-month)	Any money remaining in your dining account is forfeited
Aug. 23, 2025, at noon (12-month)	Any money remaining in your dining account is forfeited

### MOVE-IN/MOVE-OUT DATES

Sept. 8, 2024, time varies	12-month apartment move-in: time assigned by HFS
Sept. 17-20, 2024, time varies	Residence hall move-in: time assigned by HFS
June 14, 2025, at noon	9-month residents move-out
Aug. 23, 2025, at noon	12-month apartment move-out

### PAYMENT DUE DATES

Oct. 11, 2024	Fall quarter housing payment due
Jan. 24, 2025	Winter quarter housing payment due
April 18, 2025	Spring quarter housing payment due
Monthly (1 <sup>st</sup> day of the month)	12-month housing payment due

## SUSTAINABILITY & RECYCLING

### Waste on campus

You'll see three bins on campus: compost, recycling and landfill. Learn how to sort it all out and make an impact. [uwrecycling.com](https://uwrecycling.com)

### Campus Sustainability Fund (CSF)

CSF provides grants for student-led projects on campus and has awarded over \$3.5 million since 2010. [csf.uw.edu](https://csf.uw.edu)

### Energy transformation

Learn how the UW is working to end our use of fossil fuels and move to 100% clean energy. [sustainability.uw.edu/energy-transformation](https://sustainability.uw.edu/energy-transformation)

### UW sustainability

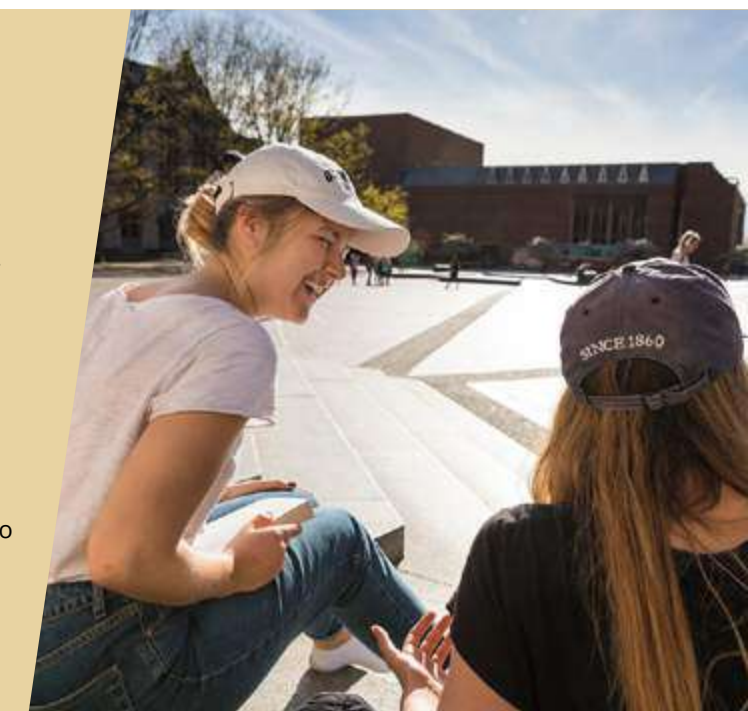
We encourage and coordinate green efforts. Find dozens of student groups and more at [sustainability.uw.edu](https://sustainability.uw.edu).

## FIVE TIPS TO MAKE FRIENDS

We asked students how to make friends in their first year. Here are their top five tips.

1. If you live on campus, post your social media handle on your door.
2. Chat with someone in your class or make a group chat with your classmates to stay connected.
3. Join a study group.
4. When you see a group of people, feel free to approach. Most groups on campus are welcoming to new Huskies.
5. Join a student organization based on your interests, such as a registered student organization (RSO).

Find support for every aspect of the Husky Experience, from studying to making friends, in the Husky Experience Toolkit. [fyp.uw.edu/hgtoolkit](https://fyp.uw.edu/hgtoolkit)







## CAMPUS ENGAGEMENT &

*embracing community*

### JOIN A FIRST-YEAR COMMUNITY

There are several ways to get connected to campus while taking classes and beginning your first quarter. As a first-year, consider focusing on the areas below, and learn more at [fyp.uw.edu/hgcommunity](http://fyp.uw.edu/hgcommunity).



**Connect with the UW** by taking classes and attending events based on your interests.



**Find a mentor** through a Registered Student Organization (RSO).



**Build your community** through a First-Year Interest Group (FIG) or a First-Year Network.

### FRATERNITY & SORORITY LIFE

Membership in a fraternity/sorority provides more than you might think — the decision to join can impact all facets of your collegiate experience. Our community is comprised of 55 chapters with over 4,000 active members in four councils: Interfraternity Council, Multicultural Greek Council, National Pan-Hellenic Council, and the Panhellenic Association.

Learn more about the membership experience and joining process through our A&O modules, and connect with current students during A&O. [fyp.uw.edu/hggreek](http://fyp.uw.edu/hggreek)

Discover opportunities to find community at the UW in the **pre-A&O modules** and the **post-A&O modules**, including information about Dawg Daze, finding your place and participating in an activity.

#### CAMPUS ENGAGEMENT CHECKLIST

- Subscribe to UW Alert text messages**  
Get a message if there's an emergency on or near campus. [uwalert.org](http://uwalert.org)
- Make your Dawg Daze schedule**  
Dawg Daze is your welcome to the Husky community: meet other new students, explore campus and get involved. [uwdawgdaze.com](http://uwdawgdaze.com)
- Explore the Registered Student Organization directory**  
Find over 900 registered student organizations on campus. [huskylink.washington.edu](http://huskylink.washington.edu)

#### INTERNATIONAL STUDENT CHECKLIST

- Attend a virtual International Husky Welcome session for your region**  
[fyp.uw.edu/hgsendoff](http://fyp.uw.edu/hgsendoff)
- Join Regional Connection Group (RCG) chats to connect with new Huskies**  
[fyp.uw.edu/aorcg](http://fyp.uw.edu/aorcg)
- Complete the online new student Post-Arrival Checklist**  
[fyp.uw.edu/hgisscheckin](http://fyp.uw.edu/hgisscheckin)

## SEVEN WAYS TO FIND YOUR PLACE

We have several physical spaces around the UW that you should know as a UW student. Plan to visit these spaces when you come to campus to find your place and thrive in your first year.



### CREATE YOUR COMMUNITY

Do you have a passion or identity but are having trouble finding a community that reflects it? You can create your own community by registering a Student Organization, get involved in Student Government, or develop a connection with an SAO Adviser. [hub.washington.edu/get-involved/sao](http://hub.washington.edu/get-involved/sao)



#### 1. SAMUEL E. KELLY ETHNIC CULTURAL CENTER

Attend cultural events to engage with our community and enhance your leadership skills. Visit the wellness room, serenity space, social justice library, and Leadership Without Borders (undocumented-student program). [depts.uw.edu/ecc](http://depts.uw.edu/ecc)

#### 2. SCHMITZ HALL

Get answers about your tuition and financial aid questions, explore study abroad, or make a counseling appointment with a therapist. Get advice from International Student Services (ISS) and chat with Center for International Relations & Cultural Leadership Exchange (CIRCLE).

#### 5. MARY GATES HALL

Explore the following offices to succeed in your first year: Academic Support Programs (CLUE tutoring and academic success coaching); UAA advising; First Year Programs; Community Engagement and Leadership Education (CELE) Center; Career & Internship Center; Center for Experiential Learning and Diversity; Academic Counseling Services within Office of Minority Affairs & Diversity (OMA&D) Counseling Services.

#### 6. HUSKY UNION BUILDING

Get involved with ASUW, GPSS or an RSO. Find cultural/identity spaces (Q Center, D Center, Student Veteran Life, CTC). Play games (bowling, pool, table tennis, esports), and discover the bike shop, banking and ATMs, the Husky Den Food Court and University Book Store. [@hubatuw](http://@hubatuw)

#### 3. ODEGAARD LIBRARY

Get writing and research help, reserve study rooms, check out course textbooks, and use the computer labs! The library also offers a computer-vet help desk, a sound studio, and the undergraduate book collection. [lib.washington.edu/ougl](http://lib.washington.edu/ougl)

#### 7. UW RECREATION

Stay active at the Intramural Activities Building (IMA). Rock climb at Crags; rent equipment from the Gear Garage; swim at the brand-new 14-lane pool; explore with UWild Adventures; visit the Golf Range, Waterfront Activities Center and Massage Clinic; learn sports skills and martial arts; and participate in intramural sports, sports clubs, personal training and fitness and mindfulness classes. [uw.edu/ima](http://uw.edu/ima)

#### 4. wələbʔaltx<sup>w</sup> INTELLECTUAL HOUSE

A gathering space for American Indian/Alaska Native students, faculty, and staff, and the UW community. You will find academic and cultural student programming. [uw.edu/omad/intellectual-house](http://uw.edu/omad/intellectual-house)



Use the Scout app to find places to study and eat on campus. [scout.uw.edu/seattle](http://scout.uw.edu/seattle)



# YOUR WELL-BEING &

*healthy living*

## HUSKY HEALTH CENTER

The Husky Health Center (HHC) is your home for all your general health needs while you are a student at the UW. Treating everything from sore throats to sports injuries, it is your convenient and centrally located resource for primary care, physical therapy, free nurse advice, OB/GYN, immunizations, travel medicine, lab work, X-rays and much more.

As a member of the renowned UW Medicine system, the clinic offers diverse care options and is a fantastic resource for students as they transition to oversee their own medical care. HHC highly recommends that all students set up an account on MyChart before beginning their first quarter so that they can access resources as soon as they arrive.



If you don't already have a UW Medicine MyChart account, scan this code or follow the link below and click the "sign up now without an activation code" button to activate MyChart at the Husky Health Center today!

[mychart.uwmedicine.org](http://mychart.uwmedicine.org)

Huskies also love to take advantage of bargain prices at Rubenstein Pharmacy and a variety of safer sex supplies like free condoms and lube, supplied by Husky Health. Be sure to ask about all the health benefits you receive at HHC as a fee-paying student at the UW!

[hallhealth.washington.edu](http://hallhealth.washington.edu)

### HUSKY TIP: ACCESS TO COUNSELING

The UW Counseling Center offers multiple options for students seeking help coping with stress and mental health concerns. Students who are currently enrolled in degree-seeking programs at the Seattle campus are eligible for our counseling services. [mentalhealth.uw.edu](http://mentalhealth.uw.edu)

Explore health and well-being resources in the **pre-A&O modules** and the **post-A&O modules**, including information about mental health, campus safety, and navigating health insurance and immunizations.

### HEALTH & WELL-BEING CHECKLIST

- Complete the Know Your Benefits questionnaire**  
[fyp.uw.edu/hgbenefits](http://fyp.uw.edu/hgbenefits)
- Identify in-network providers close to the UW**  
Find a primary care, urgent care, emergency care and/or mental health providers and save them in your phone.  
[fyp.uw.edu/hginsurance](http://fyp.uw.edu/hginsurance)
- Subscribe to Healthy Huskies Magazine**  
Sign up for weekly alerts with articles and tips for success.  
[fyp.uw.edu/hglivewell](http://fyp.uw.edu/hglivewell)
- Download the SafeZone app**  
[police.uw.edu/safezone-app](http://police.uw.edu/safezone-app)
- Review UW Safety Resources**  
[washington.edu/safety/resources](http://washington.edu/safety/resources)
- Complete the Husky Prevention & Response online course**  
[tixstudent.uw.edu](http://tixstudent.uw.edu)
- Explore resources for mental health support**  
[fyp.washington.edu/hgmh](http://fyp.washington.edu/hgmh)

## LIVEWELL

LiveWell works with students to develop the knowledge and skills to make informed decisions about their health and well-being. LiveWell's free services include alcohol and other drug education and consultations, recovery support, suicide intervention, sexual assault and relationship violence confidential support, peer health education workshops and programs, and one-on-one Peer Wellness Coaching appointments. To learn more and schedule an appointment, visit the LiveWell website. [livewell.uw.edu](http://livewell.uw.edu)



### Peer Wellness Coaching

This wheel highlights the interconnected nature of our well-being, teaching us the importance of developing lifelong skills to manage difficult situations, build resiliency and thrive. If you are looking to improve your skills and knowledge about an aspect of your well-being, schedule with a Peer Wellness Coach for 1-1 support! Peer Wellness Coaching is easily accessible, free, and has same-week availability. [livewell.uw.edu/pwc](http://livewell.uw.edu/pwc)

### LiveWell Confidential Advocates

The best first step for students impacted by sexual assault, relationship violence, stalking or sexual harassment is to learn what options and rights they have from a Confidential Advocate. LiveWell's Confidential Advocates help these students by providing academic accommodations, reporting options, trauma-specific medical and mental health support, and more. Learn more or schedule on the LiveWell website. [livewell.uw.edu/survivor-support-advocacy](http://livewell.uw.edu/survivor-support-advocacy)

## SAFECAMPUS

SafeCampus' mission is to foster a safe and supportive UW community. Call SafeCampus, no matter where you work or study, to anonymously discuss safety and well-being concerns for yourself or others. We'll listen to your concerns to provide guidance, tailored safety plans and resources. Often students call regarding stalking, sexual assault, suicide concerns, violence concerns and other types of bullying/harassment.

[uw.edu/safecampus](http://uw.edu/safecampus)

## TITLE IX

Title IX is a federal gender-equity law prohibiting sex- and gender-based discrimination in education programs and activities. Sexual assault, sexual harassment, relationship violence, and stalking are among the forms of discrimination UW policy prohibits. If you experience one of these forms of violence or harassment, you have the right to request supportive measures and access resources, whether or not you make a formal complaint. You also have the right to make a formal complaint to the UW or a report to the police.

Submitting an online Title IX report will connect you with a case manager who will explain supportive measures and resolution options, and provide referrals to additional resources. If you are seeking confidential support, or are not yet sure if you want the University to know about your experience, a Confidential Advocate is a good place to start.

**Title IX Coordinator:** Valery Richardson • [titleix@uw.edu](mailto:titleix@uw.edu) • 206-221-7932 • [uw.edu/titleix](http://uw.edu/titleix)



## NAVIGATING SUPPORT SYSTEMS

**If you are seeking confidential support or safety planning:**

LiveWell Confidential Advocates  
[livewell.uw.edu/survivor-support-advocacy](http://livewell.uw.edu/survivor-support-advocacy)

**If you are seeking supportive measures, want to learn about submitting a formal complaint, or want the University to be aware of a situation:**

Title IX Case Manager  
[uw.edu/titleix/report](http://uw.edu/titleix/report)

**If you want to report to the police (for incidents that occurred on the UW campus in Seattle):**

UW Police Department: 911 or 206-685-8973 (non-emergency)  
[police.uw.edu](http://police.uw.edu)

**If you want to report to the police (for incidents that occurred in the City of Seattle):**

Seattle Police Department: 911 or 206-625-5011 (non-emergency)  
[seattle.gov/police](http://seattle.gov/police)

# We choose students over profits

Find everything you need at the University Book Store and feel good about your purchase!

We have all of the course materials and supplies that your Husky needs to succeed in college, and you'll find a great selection of gifts, Husky merch, and books. 100% of our profits go directly to helping UW students and staff.

**Because your student's success is our mission.**

University Book Store®